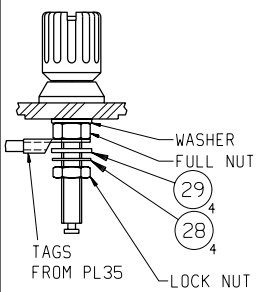
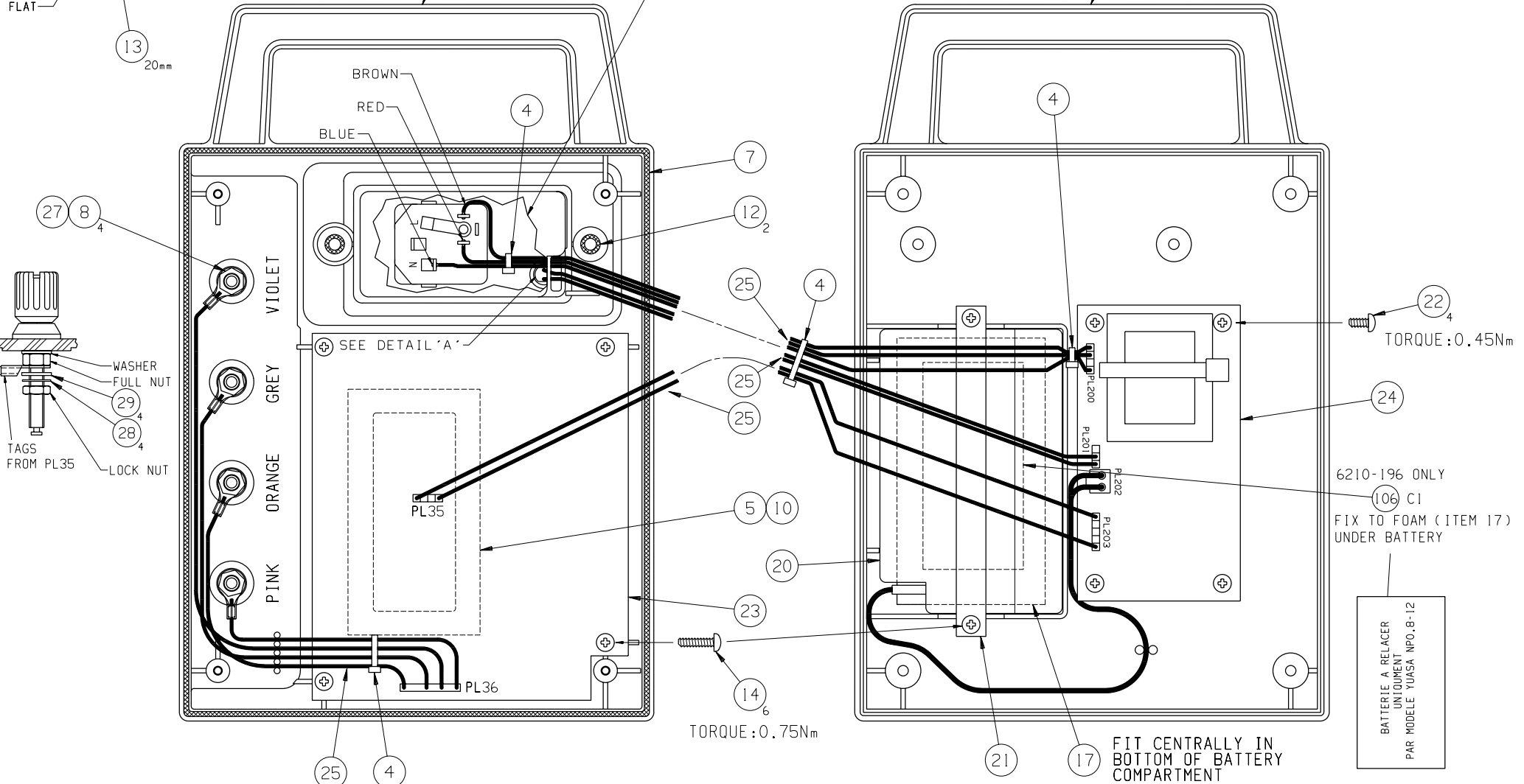
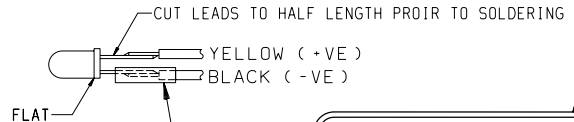


1 2 3 4 5 6

DETAIL 'A'
CHARGER LED

NOTE -
ALSO REFER TO
SEE BOM 6111-229



BATTERIE A RELACER
UNITEQUIMENT
PAR MODELE YUASA NPO.8-12

CAD DRAWING. NO MANUAL CHANGES PERMISSIBLE THIS IS A COMPONENT DRAWING AND THE TOLERANCES SHOWN REFER TO THE COMPONENT AND NOT ITS ASSOCIATED TOOLING THE COPYRIGHT IN THIS DRAWING IS OWNED BY AVO INTERNATIONAL LTD. THIS DRAWING MUST NOT BE COPIED OR REPRODUCED, EITHER IN WHOLE OR IN PART, WITHOUT THE PRIOR WRITTEN CONSENT OF THE COPYRIGHT OWNER.	DO NOT SCALE IF IN DOUBT ASK! DIMENSIONS IN MILLIMETRES TOLERANCES, UNLESS OTHERWISE STATED: NOMINAL DIMENSIONS ± 0.5 DIMS. TO 1 DEC. PLACE ± 0.15 ANGULAR DIMENSIONS ± 1° HOLES TO BS4500 H11	THIRD ANGLE PROJECTION	DRAWN: P.G. Nichols DATE: 19-02-96
			SCALE: 3:4 SHT. 1 OF 3 SHTS.
(C)		IF MULTIPLE SHEET DRAWING, ALL SHEETS MUST BE AT THE SAME ISSUE	MATERIAL: SEE BOM
			FINISH:
			ISSUE DATE CN No. 8 25-09-01 21208 9 15-11-01 21259

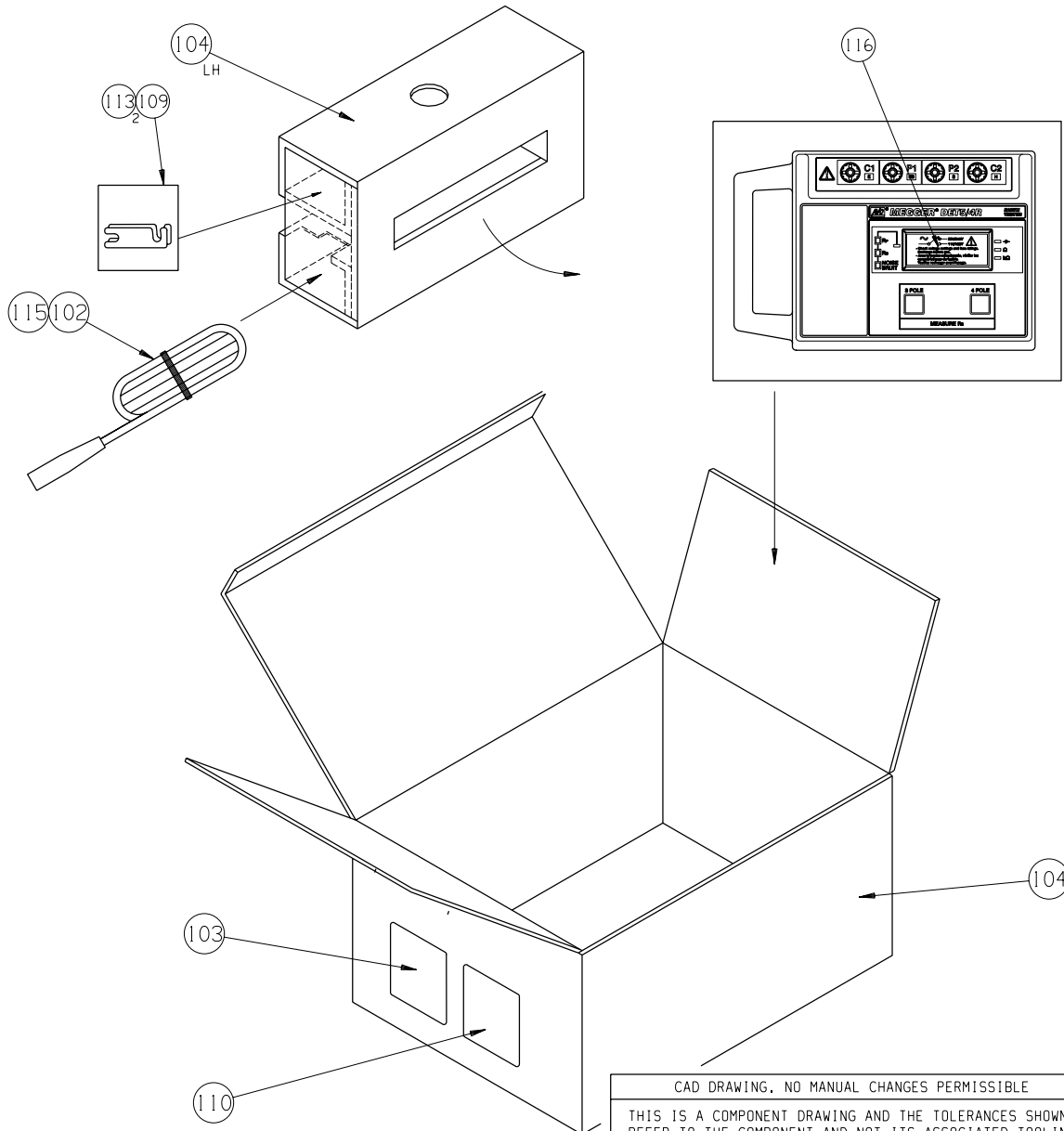
A3/ES 1 2 3 4 5 6



AVO INTERNATIONAL LTD.
Archcliffe Road, Dover, Kent, CT17 9EN, England

TITLE INSTRUMENT ASSEMBLY
FIRST USED ON: DET5/4R

PART No. 6210-179



NOTES

1. VOLTAGE SELECTOR LABEL (ITEM 116) TO BE PLACED OVER CLEAR FILM ON DISPLAY.
2. PUT INSTRUMENT INTO POLYTHENE BAG (ITEM 114), AND SECURE WITH SELLOTAPE.
3. PLACE SHORTING LINKS (ITEM 113) IN POLYTHENE BAG (ITEM 109) AND INSERT INTO COMPARTMENT AS SHOWN.
4. PLACE OPERATING INSTRUCTIONS (ITEM 100), WARRANTY CARD (ITEM 101) & CERTIFICATE OF TEST (ITEM 111) ON TOP OF INSTRUMENT.

CAD DRAWING. NO MANUAL CHANGES PERMISSIBLE THIS IS A COMPONENT DRAWING AND THE TOLERANCES SHOWN REFER TO THE COMPONENT AND NOT ITS ASSOCIATED TOOLING THE COPYRIGHT IN THIS DRAWING IS OWNED BY AVO INTERNATIONAL LTD. THIS DRAWING MUST NOT BE COPIED OR REPRODUCED, EITHER IN WHOLE OR IN PART, WITHOUT THE PRIOR WRITTEN CONSENT OF THE COPYRIGHT OWNER.	DO NOT SCALE IF IN DOUBT ASK DIMENSIONS IN MILLIMETRES TOLERANCES, UNLESS OTHERWISE STATED: NOMINAL DIMENSIONS ± 0.5 DIMS. TO 1 DEC. PLACE ± 0.15 ANGULAR DIMENSIONS ± 1° HOLES TO BS4500 H11	THIRD ANGLE PROJECTION	DRAWN: P.G. Nichols DATE: 19-02-96 SCALE: 1:4 SHT. 3 OF 3 SHTS.									
		IF MULTIPLE SHEET DRAWING, ALL SHEETS MUST BE AT THE SAME ISSUE	MATERIAL: SEE BOM FINISH:									
		<table border="1"> <thead> <tr> <th>ISSUE</th> <th>DATE</th> <th>CN No.</th> </tr> </thead> <tbody> <tr> <td>8</td> <td>25-09-01</td> <td>21208</td> </tr> <tr> <td>9</td> <td>16-11-01</td> <td>21259</td> </tr> </tbody> </table>	ISSUE	DATE	CN No.	8	25-09-01	21208	9	16-11-01	21259	
ISSUE	DATE	CN No.										
8	25-09-01	21208										
9	16-11-01	21259										